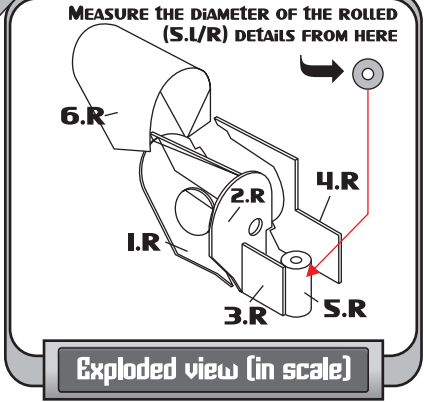


E.S.I

QUANTITY OF ELEMENTS ON THE SHEET: **2x2**

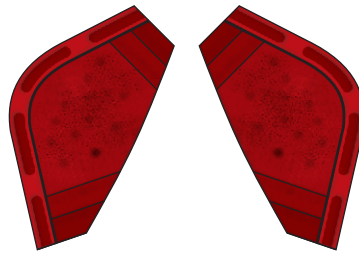
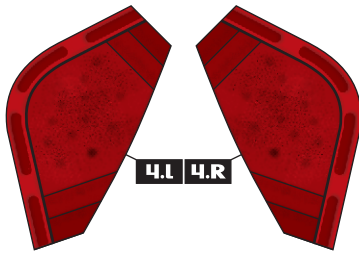
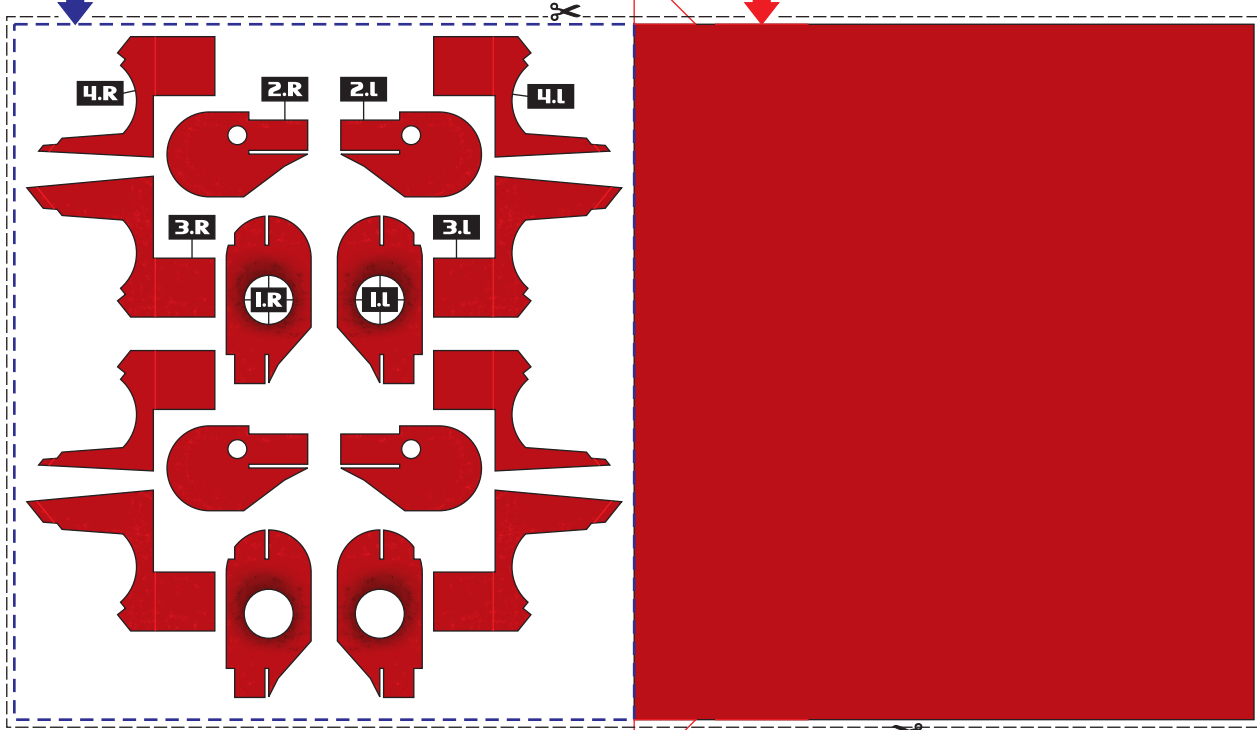
S.I / S.R

USE THESE BANDS TO ROLL ELEMENTS S.I. AND S.R



GLUE THE BORDERED AREA ON A SHEET OF 0.5 MM THICK CARDBOARD

BEND AND GLUE ON THE BACK SIDE OF THE THICK CARDBOARD

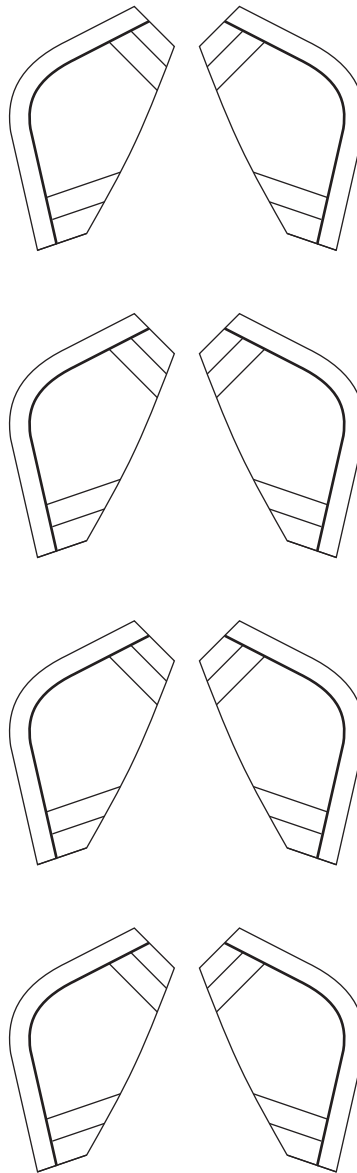
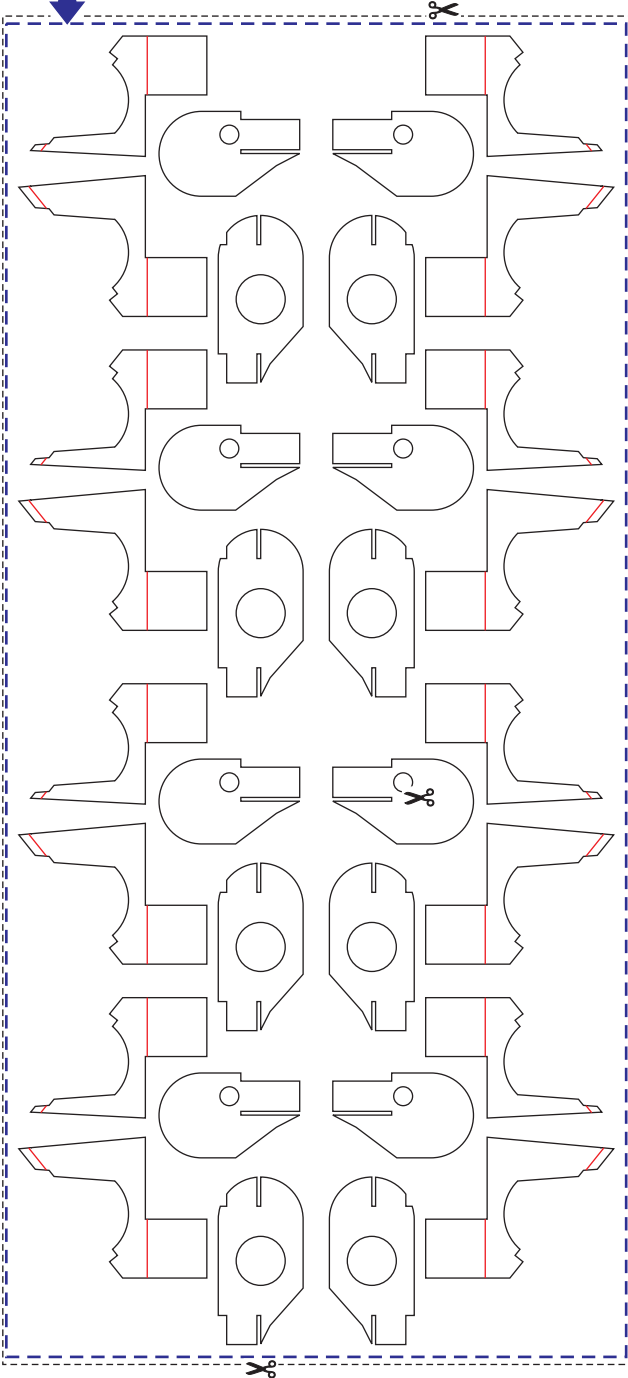


CM

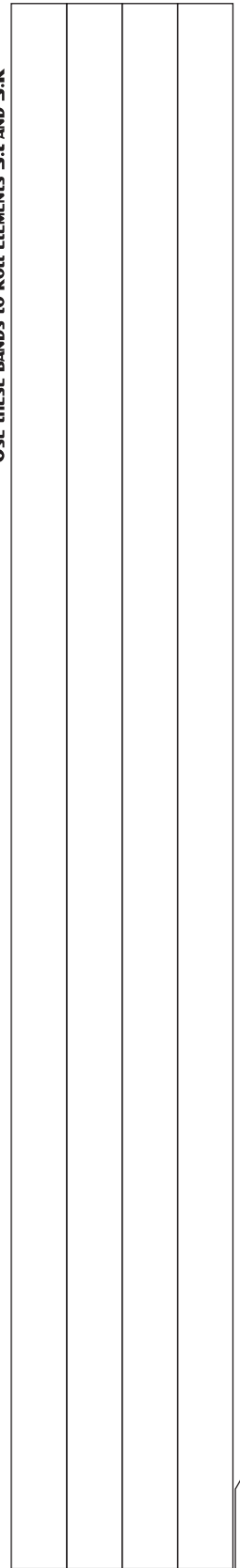
INCHES

FOR MORE INFORMATION, VISIT THE MODULE'S WEB PAGE IN <http://robots.phobby.com>

GLUE THE BORDERED AREA ON A SHEET OF 0.5 MM THICK CARDBOARD



USE THESE BANDS TO ROLL ELEMENTS S.1 AND S.R



CM

INCHES

2